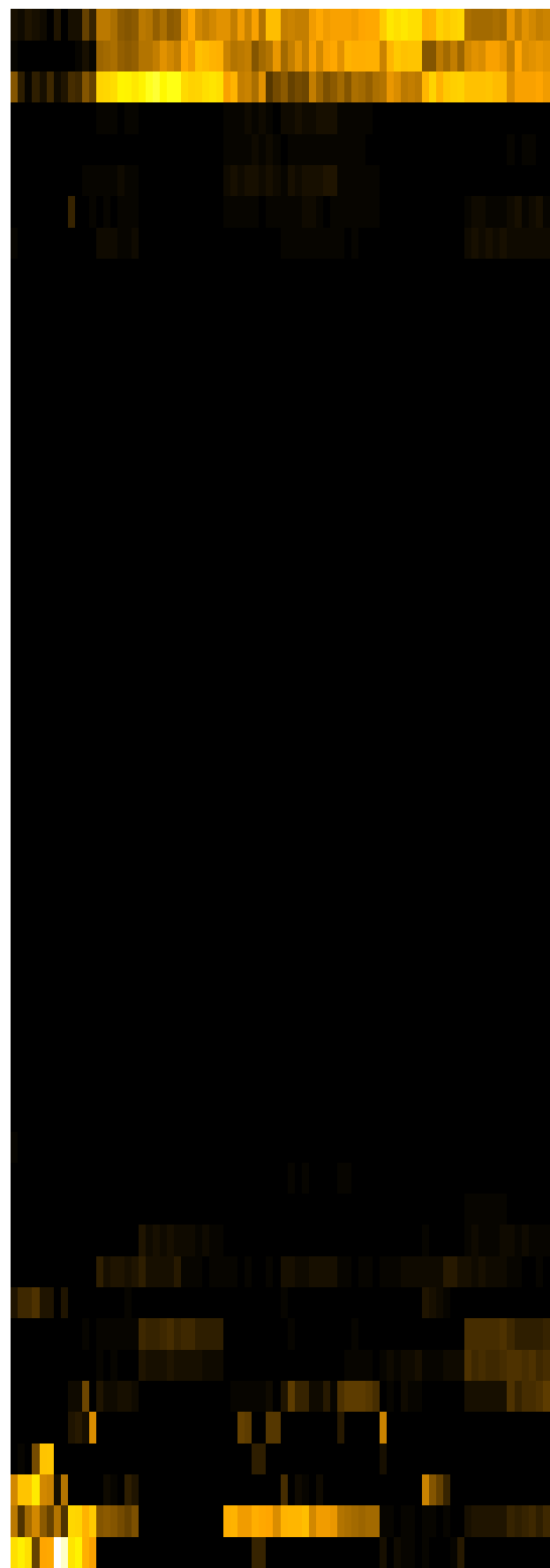
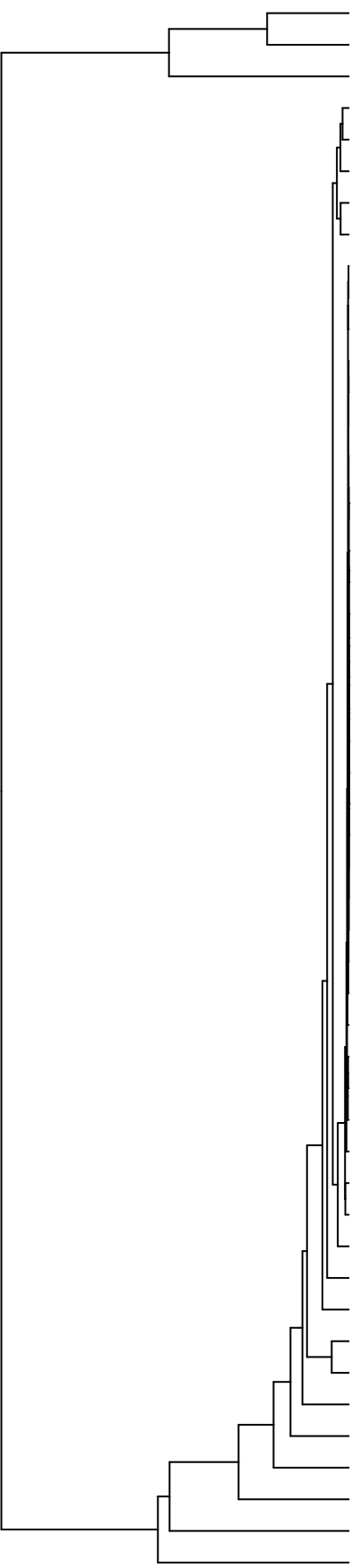


Group005
 Baseline
 Final J -PMA



- Veillonella
- Haemophilus
- Neisseria
- Eikenella
- Schaalia
- Granulicatella
- Rothia
- Gemella
- Catonella
- Oribacterium
- Actinomyces
- Lachnoanaerobaculum
- Lancefieldella
- Absconditabacteria_(SR1)_[G-1]
- Saccharibacteria_(TM7)_[G-6]
- Novosphingobium
- Acinetobacter
- Mycolicobacterium
- Agrobacterium
- Acidovorax
- Lachnospiraceae_[G-2]
- Pseudomonas
- Serratia
- Leifsonia
- Sphingobium
- Microbacterium
- Siccationidurans
- Cutibacterium
- Phyllobacterium
- Riemerella
- Capnocytophaga
- Delftia
- Lautropia
- Solobacterium
- Saccharibacteria_(TM7)_[G-1]
- Stomatobaculum
- Staphylococcus
- Leptotrichia
- Alloprevotella
- Prevotella
- Aggregatibacter
- Salmonella
- Campylobacter
- Porphyromonas
- Fusobacterium
- Enterobacter
- Raoultella
- Citrobacter
- Streptococcus
- Klebsiella

- F28914.S465
- F28914.S466
- F28914.S470
- F28914.S467
- F28914.S612
- F28914.S610
- F28914.S029
- F28914.S026
- F28914.S027
- F28914.S047
- F28914.S046
- F28914.S048
- F28914.S070
- F28914.S072
- F28914.S071
- F28914.S305
- F28914.S311
- F28914.S312
- F28914.S310
- F28914.S147
- F28914.S146
- F28914.S150
- F28914.S152
- F28914.S053
- F28914.S054
- F28914.S051
- F28914.S056
- F28914.S060
- F28914.S059
- F28914.S033
- F28914.S036
- F28914.S041
- F28914.S040
- F28914.S042
- F28914.S061
- F28914.S063
- F28914.S065

Genus

Samples